

Selsley Common



How to mark a Lark

Skylarks are most easily spotted when they are singing, so listen carefully when you are out for your walks. Do not attempt to walk to where the lark is singing as you may inadvertently damage a nest. If you spot a lark, estimate how far away from the path it is, and mark it with an 'X' in the appropriate square. Only mark each bird once.

Record the time range and date of your walk on your leaflet. Drop your leaflet back to the SVP eco shop on Threadneedle Street, Stroud, take a picture of your leaflet and send it to info@stroudvalleysproject.org, or tag us on social media.



Time:

Date:



Dingy Skipper

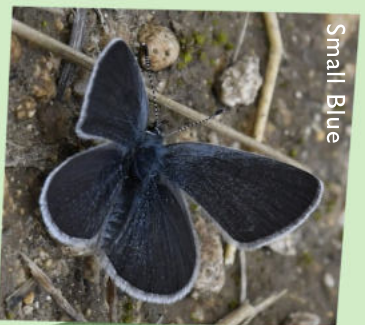


Wheatear

Skylark



The Grove



Small Blue



The Toots
Leng Barrow



Early Purple
Orchid



Babb

What else lives here?

Selsley Common is a Site of Special Scientific Interest (SSSI) due to its rare ecology and special geology. Its long barrow is a Scheduled Ancient Monument.

It hosts lots of grasses and wildflowers, including Sheep's Fescue, Rock Rose, Bird's-foot Trefoil and orchids, including Autumn Lady's Tresses and Bee Orchids.

As a result of its great grassland it also has lots of invertebrates, including Small Blue, Grayling and the rare Duke of Burgundy butterflies.



Bee x Fly Orchid



Chalkhill Blue